



OSM Thome

PRESENTATION OF

ENS as tool for Safe Navigation in Port

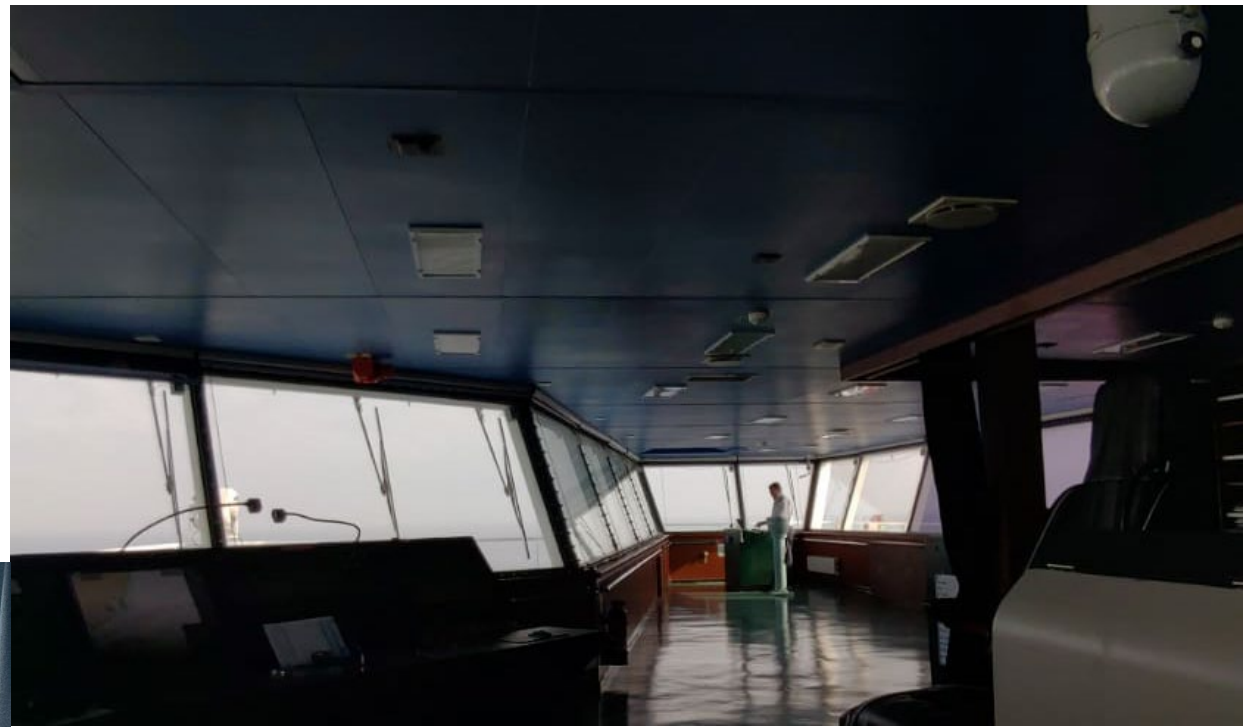
Navigation Ashore

- ✓ How many of us drove our cars to this venue today using this technology in our smartphones.



Navigation Onboard

- ✓ How can we allow our ships to navigate in congested waters mostly reliant on visuals and with scanty electronic input.

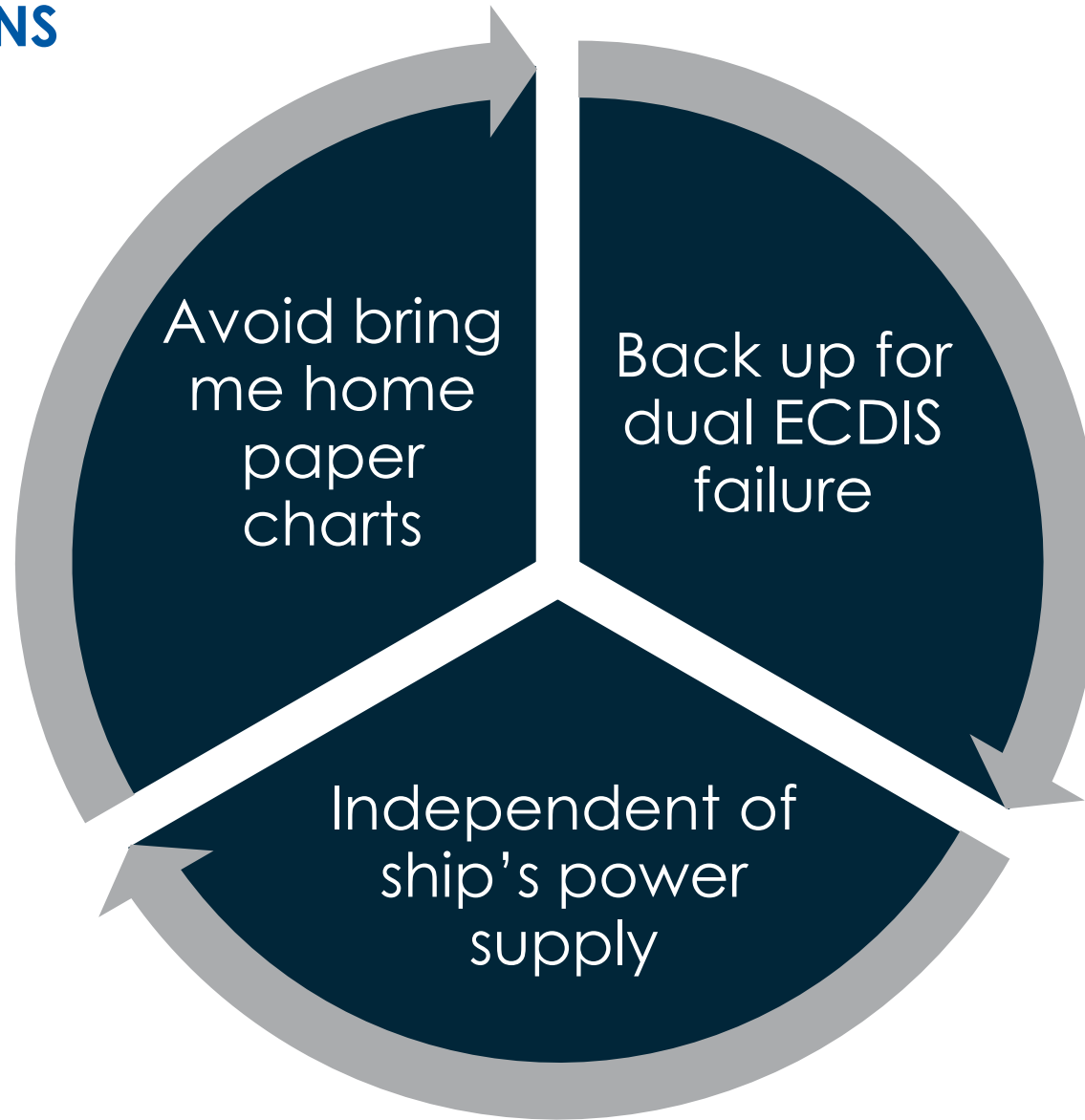


Special Focus on PCTC

- Frequent port of calls
- Huge windage areas
- Traditionally underpowered side thrusters
- Restricted visual view from the bridge during maneuvers
- Most berths located in cramped corners of the port
- Only stbd side-to maneuvers regardless of prevailing weather conditions



Navigation beyond ENS



Gap Analysis

CURRENT STATE

Ships have to navigate in congested waters solely reliant on visuals and little none electronic input



ACTION PLAN

Tool Selected – Chartworld
Emergency Navigation
System

DESIRED STATE

Reliable decision support system provided for Masters and Bridge Teams

MATERIALIZING THE IDEA



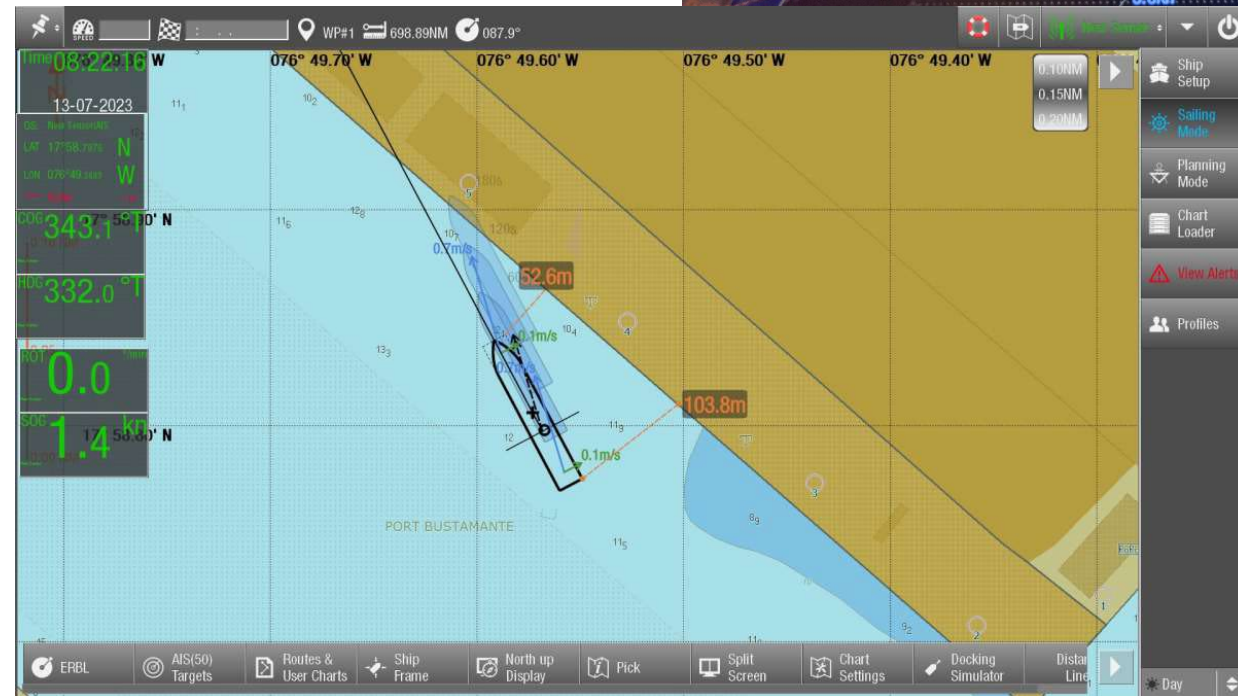
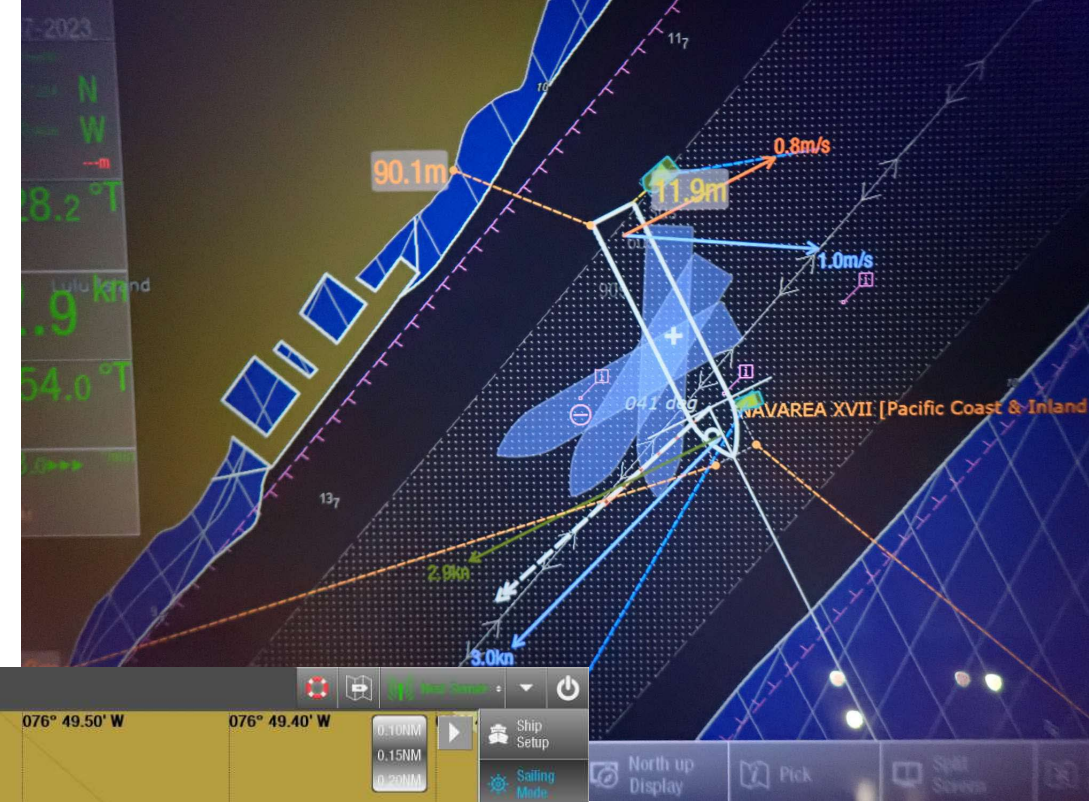
Equipment was distributed across the fleet

Being compact and portable it can easily
fit into different bridge layouts



Providing Enhance Situational Awareness at any location

- Speed over ground
- Heading
- Rate of turn
- Side movement of bow and stern
- Movement prediction
- Distance lines
- Docking Simulator
- Position of tugs



The ChartWorld ENS offers practical benefits by providing accurate chart information, real-time positioning, route planning, and safety features. It significantly aids ship manoeuvring, berthing, and unberthing operations, improving efficiency and safety during these critical phases of navigation.

Capt. Yan Yemets Sr

This instrument provides vital assistance during maneuver in a confined harbor.

Capt. Denys Chyrkin

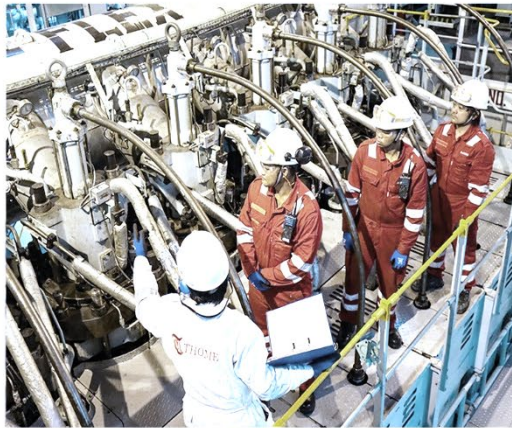
Feedback from Masters

Even Pilots who are not equipped with such equipment are watching our screen for a reference.

Capt. Hristov Tzvetan

I always use it during manoeuvring. My conclusion – this equipment is a “must have” for every vessel.

Capt. Sergiy Khimchenko



OSM Thome

CONTACT US

ASHWANI AGARWAL
Director Fleet Operations
ashwani.agarwal@osmthome.com

P: [+65 9231 0410](tel:+6592310410)